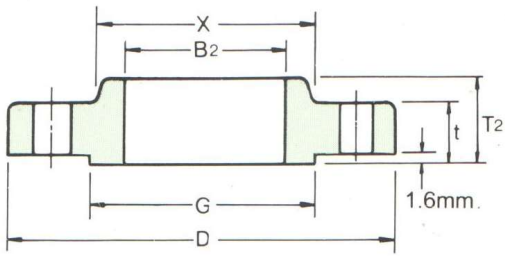
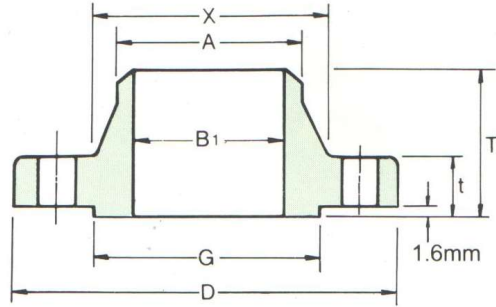


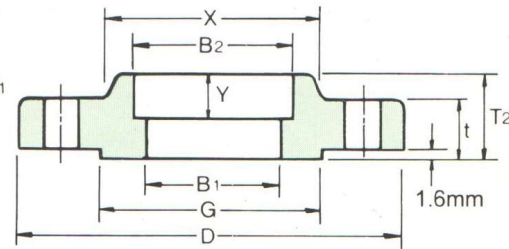
CLASS 150 FLANGES



SLIP-ON



WELDING NECK



SOCKET WELDING

ANSI B16.5 FORGED FLANGES

Unit:mm

Nominal Pipe Size	Outside Diam.	O. D. of Raised Face	Diam. at Base of Hub	Thick-ness	BORE			LENGTH THRU HUB			Diam. of Hub at Bevel	Radius of Fillet	Thread Length
					Welding Neck Socket Welding	Slip-on Socket Welding	Lap Joint	Welding Neck	Slip-on Threaded Socket Welding	Lap Joint			
					B ₁	B ₂	B ₃	T ₁	T ₂	T ₃			
D	G	X	t	B ₁	B ₂	B ₃	T ₁	T ₂	T ₃	A	R	Q	
1/2	89	35.1	30.2	11.2	15.7	22.4	22.9	47.8	15.7	15.7	21.3	3.0	15.7
3/4	99	42.9	38.1	12.7	20.8	27.7	28.2	52.3	15.7	15.7	26.7	3.0	15.7
1	108	50.8	49.3	14.2	26.7	34.5	35.1	55.6	17.5	17.5	33.5	3.0	17.5
1 1/4	117	63.5	58.7	15.7	35.1	43.2	43.7	57.2	20.6	20.6	42.2	4.8	20.6
1 1/2	127	73.2	65.0	17.5	40.9	49.5	50.0	62.0	22.4	22.4	48.3	6.4	22.4
2	152	91.9	77.7	19.1	52.6	62.0	62.5	63.5	25.4	25.4	60.5	7.9	25.4
2 1/2	178	104.6	90.4	22.4	62.7	74.7	75.4	69.9	28.4	28.4	73.2	7.9	28.4
3	191	127.0	108.0	23.9	78.0	90.7	91.4	69.9	30.2	30.2	88.9	9.7	30.2
3 1/2	216	139.7	122.2	23.9	90.2	103.4	104.1	71.4	31.8	31.8	101.6	9.7	31.8
4	229	157.2	134.9	23.9	102.4	116.1	116.8	76.2	33.3	33.3	114.3	11.2	33.3
5	254	185.7	163.6	23.9	128.3	143.8	144.5	88.9	36.6	36.6	141.2	11.2	36.6
6	279	215.9	192.0	25.4	154.2	170.7	171.5	88.9	39.6	39.6	168.4	12.7	39.6
8	343	269.7	246.1	28.4	202.7	221.5	222.3	101.6	44.5	44.5	219.2	12.7	44.5
10	406	323.9	304.8	30.2	254.5	276.4	277.4	101.6	49.3	49.3	273.1	12.7	49.3
12	483	381.0	365.3	31.8	304.8	327.2	328.2	114.3	55.6	55.6	323.9	12.7	55.6
14	533	412.8	400.1	35.1	336.6	359.2	360.2	127.0	57.2	79.2	355.6	12.7	57.2
16	597	469.9	457.2	36.6	387.4	410.5	411.2	127.0	63.5	87.4	406.4	12.7	63.5
18	635	533.4	505.0	39.6	438.2	461.8	462.3	139.7	68.3	96.8	457.2	12.7	68.3
20	699	584.2	558.8	42.9	489.0	513.1	514.4	144.5	73.2	103.1	508.0	12.7	73.2
24	813	692.2	663.4	47.8	590.6	616.0	616.0	152.4	82.6	111.3	609.6	12.7	82.6

Notes:

- (1) For the 'Bore' (B₁) other than Standard Wall Thickness, refer to page 60.
- (2) Class 150 flanges except Lap Joint will be furnished with 0.06" (1.6mm) raised face, which is included in 'Thickness' (t) and 'Length through Hub' (T₁), (T₂).
- (3) For Slip-on, Threaded, Socket Welding and Lap Joint Flanges, the hubs can be shaped either vertical from base to top or tapered within the limits of 7 degrees.