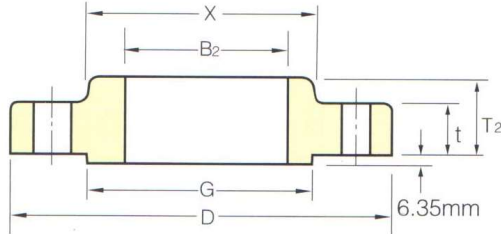
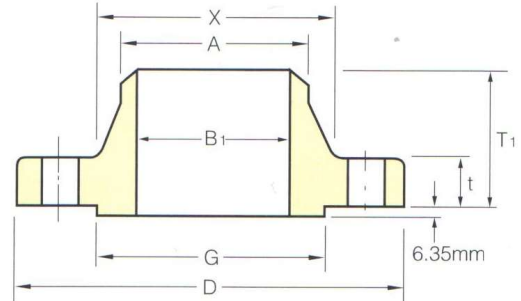


CLASS 900 FLANGES



SLIP-ON



WELDING NECK

ANSI B16.5 FORGED FLANGES

Unit:mm

Nominal Pipe Size	Outside Diam	Diam. At Base of Hub	O.D. of Raised Face	Thick-ness	BORE				LENGTH THRU HUB			Diam. of Hub at Bevel
					Welding Neck	Slip-on	Lap Joint	Counter Bore Min.	Welding Neck	Slip-on and Threaded	Lap Joint	
1/2	121	38.1	35.1	22.4	See Note(1) To be specified by purchaser.	22.4	22.9	23.6	60.5	31.8	31.8	21.3
3/4	130	44.5	42.9	25.4		27.7	28.2	29.0	69.9	35.1	35.1	26.7
1	149	52.3	50.8	28.4		34.5	35.1	35.8	73.2	41.1	41.1	33.5
1 1/4	159	63.5	63.5	28.4		43.2	43.7	44.5	73.2	41.1	41.1	42.2
1 1/2	178	69.9	73.2	31.8		49.5	50.0	50.5	82.6	44.5	44.5	48.3
2	216	104.6	91.9	38.1		62.0	62.5	63.5	101.6	57.2	57.2	60.5
2 1/2	244	124.0	104.6	41.1		74.7	75.4	76.2	104.6	63.5	63.5	73.2
3	241	127.0	127.0	38.1		90.7	91.4	92.2	101.6	53.8	53.8	88.9
4	292	158.8	157.2	44.5		116.1	116.8	117.6	114.3	69.9	69.9	114.3
5	349	190.5	185.7	50.8		143.8	144.5	144.5	127.0	79.2	79.2	141.2
6	381	235.0	215.9	55.6		170.7	171.5	171.5	139.7	85.9	85.9	168.4
8	470	298.5	269.7	63.5		221.5	222.3	222.3	162.1	101.6	114.3	219.2
10	546	368.3	323.9	69.9		276.4	277.4	276.4	184.2	108.0	127.0	273.1
12	610	419.1	381.0	79.2		327.2	328.2	328.7	200.2	117.3	142.7	323.9
14	641	450.9	412.8	85.9		359.2	360.2	360.4	212.9	130.0	155.4	355.6
16	705	508.0	469.9	88.9		410.5	411.2	411.2	215.9	133.4	165.1	406.4
18	787	565.2	533.4	101.6		461.8	462.3	462.0	228.6	152.4	190.5	457.2
20	857	622.3	584.2	108.0		513.1	514.4	512.8	247.7	158.8	209.6	508.0
24	1041	749.3	692.2	139.7		616.0	616.0	614.4	292.1	203.2	266.7	609.6

Notes:

- (1) For the inside diameter of pipes (corresponding to 'Bore' (B₁) of Welding Neck Flanges), refer to page 33.
- (2) Class 900 flanges except Lap Joint will be furnished with 0.25" (6.35mm) raised face, which is not included in 'Thickness' (t) and 'Length through Hub' (T₁), (T₂).
- (3) For Slip-on, Threaded and Lap Joint Flanges, the hubs can be shaped either vertical from base to top or tapered within the Limits of 7 degrees.